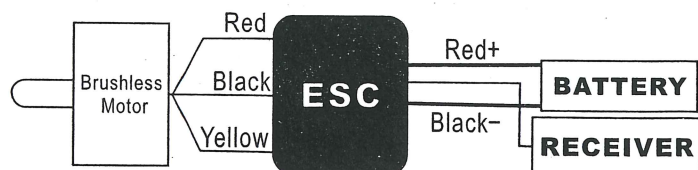
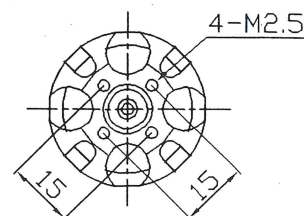
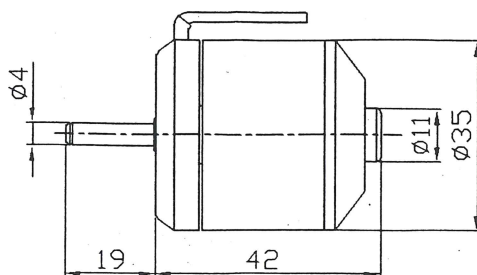
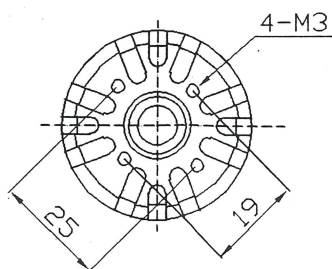




MONSTER POWER 10 Outrunner Brushless Motor



Name	Weight	Overall Diameter	Shaft Diameter	Overall Length
MonsterPower 10	5.0 oz (140g)	1.4in (35mm)	.16in (4mm)	1.65in (42mm)

Motor#	Name	KV (RPM/V)	Input Watts	Resistance	Idle Current	Continuous Current	Max Burst Current	Cells Ni-Cd /Ni-MH	Cells Li-Po
63M50	MonsterPower 10	1100	375W	.04 ohms	2.10A	30A	38A	6-10	2-3



MONSTER POWER 10 Outrunner Brushless Motor

All Exceed-RC motors are manufactured by high speed super precision CNC process. The motors can provide extremely high torque and super efficient in power consumption. If operate within the recommended parameters, the motors will provide longer hours of smooth, reliable, quiet, and efficient operation. All Exceed-RC motors have gained CE, FCC, and RoHS certifications.

Note:

1. To reverse the turning direction of the motor, simply reverse any two wires to the electronic speed controller (ESC).
2. Be sure to have sufficient airflow around the motor at all time to provide sufficient cooling.
3. Balance the propeller to reduce vibration. If using more cells(volts), you must reduce the size of the propeller.
4. This product is a precision machine that requires proper assembly and setup to avoid accidents. Failure to take caution when operating this product may result in serious injury or property damage. It is the owner responsibility to operate this product in a safe manner. Manufacturer and its distributors are not responsible in any way for any and all bodily injury(s) and/or property damage that may occur from the use of or caused by in any way this product.
5. The specifications of the product may be altered without notice. Please visit us at <http://www.exceedrc.com> for updated product information.